

# M I C H A E L GOEDHUIS

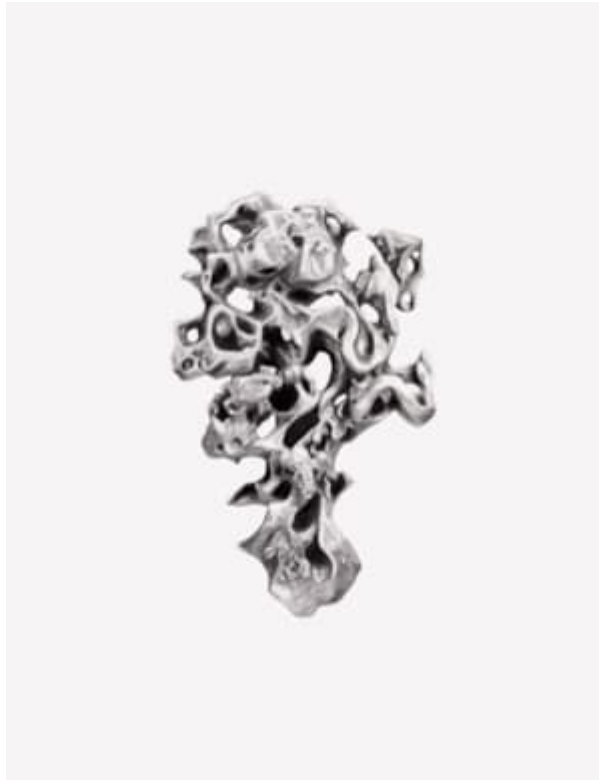
**EMILIE PUGH**

**SCHOLAR ROCK III**

2019

Pencil on paper

120 x 102 cm (47 x 40 inches)



Circa: 2019

**Artist description:**

Born in London in 1988, Emilie Pugh studied at Byam Shaw School of Art, The Ruskin School of Fine Art and Drawing at Oxford University. She currently lives and works in London. Her work over the past few years has been guided by an interest in the interconnectivity of all living things. It draws on systems of belief from the spiritual to the scientific, the micro to the macro and the conflicting or confluent universal forces that govern them.

With a focus on drawing Emilie Pugh experiments with a wide range of media and processes, from unconventional methods of mark making using incense sticks, soldering irons, chemicals and light, to the more conventional pen and ink.

Everything is in flux, evolving, growing dying and dissolving in a perpetual cycle. She is compelled by the tensions that exist between the transient and the permanent; between form and the void, and what is material and immaterial.