

M I C H A E L  
GOEDHUIS

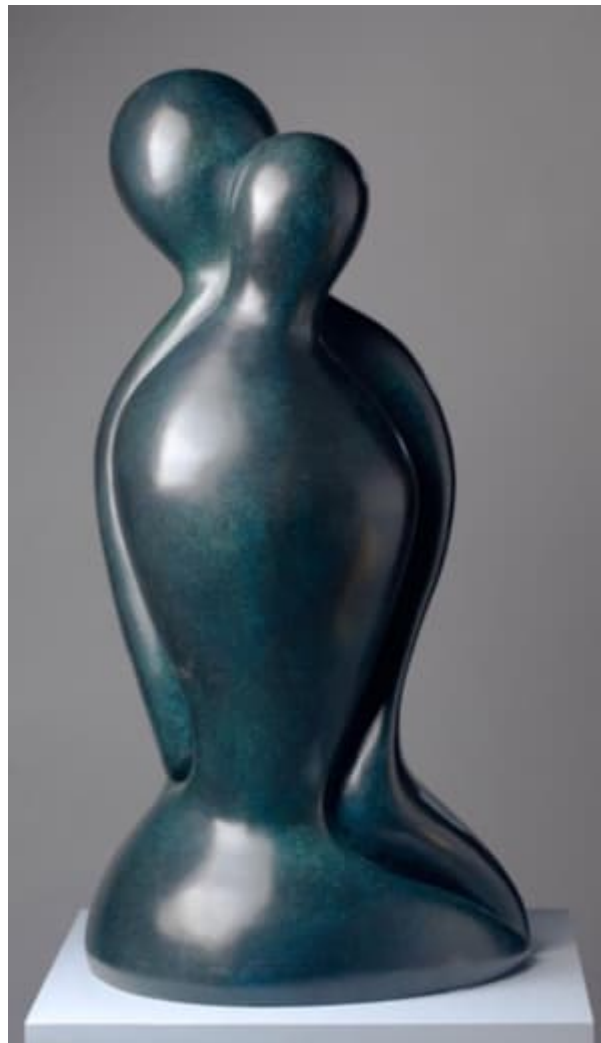
**RICHARD HUDSON**

**EMBRACE**

1997

Bronze patina

85 x 50 x 40 cm (33 <sup>1</sup>/<sub>2</sub> x 19 <sup>3</sup>/<sub>4</sub> x 15 <sup>3</sup>/<sub>4</sub> inches)



Circa: 1997

**Artist description:**

Born in Yorkshire in 1954, Richard Hudson came to sculpture relatively late in life, but has since built up a body of work that combines an emphasis on craftsmanship with a playful consideration of the relationship between figuration and abstraction.

In the late 1980's, Hudson started working in architectural design and developing property in central London. He was one of the first to take Industrial units and turn them into residential buildings. During this period and whilst travelling extensively around the world, he realised he wanted to focus solely on his art. In 1996 he settled in Spain and started creating figurative works in clay and plaster and working with the local foundries casting his work in bronze. From there, he started to experiment with different materials and his work gradually evolved from figurative sculptures. In the mid-2000s, he became

interested in replicating iconic pop imagery, but unlike the pop artists there was no element of mechanical reproduction. The 'Heart', 'Tear' and the 'Marilyn' were laboriously hand crafted. From then, the work has morphed into the increasingly abstract forms we see today. During this period, he worked in wood, bronze, marble and more increasingly polished mirrored steel.

In 2016 he completed a commission to make the largest heart in the world - an 8 metre tall polished mirrored steel sculpture; 'Love Me' at the Donum Winery Sculpture Park, in Napa Valley, California.

Over the past ten years has installed over 50 monumental sculptures in private collections, museums and sculpture parks around the world. He has successfully shown five times with Sotheby's at Chatsworth's 'Beyond Limits' exhibitions and in December 2017 he installed his sculpture 'Tear' (H: 300 cm) in Plaza 33, Penn Station outside Madison Square Gardens in New York.